

**2019 SAGUACHE COUNTY
ANNUAL OPERATING PLAN**

Table of Contents

Preamble.....	4
Purpose.....	4
Authorities.....	4
Recitals.....	4
Interagency Cooperation.....	5
Interagency Dispatch Centers.....	5
Local Dispatch Centers.....	5
Interagency Resources.....	5
Standards.....	5
Preparedness.....	5
Protection Planning.....	5
Protection Areas and Boundaries.....	5
Methods of Fire Protection and Suppression.....	6
Joint Projects and Project Plans.....	6
Fire Prevention.....	7
General Cooperative Activities.....	7
Information and Education.....	7
Public Use Restrictions.....	7
Burning Permits.....	7
Prescribed Fire (Planned Ignitions) and Fuels Management.....	8
Smoke Management.....	8
Operations.....	8
Fire Notifications.....	8
Boundary Line Fires.....	8
Response to Wildland Fire.....	9
Cost efficiency.....	11
Preservation of Evidence.....	11
State Funded Fires.....	12
Use and Reimbursement of Interagency Resources.....	12
Cost Share Agreement (Cost Share Methodologies).....	12
Training.....	13
Communication Systems.....	13
Fire Weather Systems.....	13
Aviation Operations.....	14

Billing Procedures..... 15
Cost Recovery 15
Signatures..... 16
Exhibit A: Maps 18
Exhibit B 20
Exhibit C 22
Exhibit D 23
Exhibit E 28

Preamble

This annual operating plan is prepared pursuant to the Colorado Statewide Cooperative Wildland Fire Management and Stafford Act Response Agreement (Statewide Agreement) for the State of Colorado signed and dated June 1, 2011 and as amended in 2013.

Purpose

The purpose of this Annual Fire Operating Plan (AOP) is to set forth the standard operating procedures and responsibilities to implement cooperative wildfire protection on all lands within Saguache County. The use of "County" in this plan will refer to Saguache County.

Authorities

- Colorado Statewide Cooperative Wildland Fire Management and Stafford Act Response Agreement Between:
 - BUREAU OF LAND MANAGEMENT – COLORADO Agreement Number BLM-MOU-CO-538
 - NATIONAL PARK SERVICE – INTERMOUNTAIN REGION Agreement Number F1249110016
 - BUREAU OF INDIAN AFFAIRS – SOUTHWEST REGION (no agreement number)
 - UNITED STATES FISH AND WILDLIFE SERVICE – MOUNTAIN PRAIRIE REGION ○
 - UNITED STATES DEPARTMENT OF AGRICULTURE FOREST SERVICE – ROCKY MOUNTAIN REGION Agreement Number 11-FI-11020000-017
- Saguache County, Intergovernmental Agreement for Participation in the Colorado Emergency Fire Fund, CSFS #108
- Agreement for Cooperative Wildfire Protection in Saguache County, CSFS #109

Recitals

The Saguache County Annual Operating Plan is promulgated to provide guidance to Local, State, and Federal Agencies in the prevention and suppression of wildland fire. The Saguache County Annual Operating Plan is required by the Intergovernmental Agreement for Participation in the Colorado Emergency Fire Fund and the Agreement for Cooperative Wildfire Protection in Saguache County.

Federal and non-federal lands in Saguache County are intermingled or adjacent in some areas. Wildland fires on these intermingled or adjacent lands may present a threat to the lands of the other. Wildland fire protection responsibilities on non-federal lands follow a hierarchy of local jurisdiction from Fire Protection District to County Sheriff to State of Colorado with the Colorado Division of Fire Prevention and Control being the lead state agency for wildland fire management.

It is to the mutual advantage of the Parties to this Plan to coordinate efforts for the prevention, detection, and suppression of wildfires in and adjacent to their areas of responsibility, and to limit duplication and improve the effectiveness of wildland fire response.

Interagency Cooperation

Interagency Dispatch Centers

Saguache County is served by Pueblo Interagency Dispatch Center inside of the Rio Grande National forest and Montrose Interagency Dispatch inside of the GMUG National Forest.

Local Dispatch Centers

Saguache County Sheriff's office - will dispatch for Northern Saguache Fire protection districts initial attack response in Saguache County. Colorado State Patrol – will dispatch for Baca Grande POA.

Interagency Resources

See "DFPC Phone List" section for resource and contact information in Exhibit C.

Standards

Each jurisdictional agency is responsible for establishing standards for wildland fire response.

As per the NWCG memorandum Qualification Standards during Initial Action, March 22, 2004 and the PMS 310-1 Wildland Fire Qualification System Guide:

- The 310-1 qualification/certification standards are **mandatory only for national mobilization** of wildland firefighting resources.
- During initial action, all agencies (federal, state, local and tribal) accept each other's standards. **Once jurisdiction is clearly established**, then the standards of the agency(s) with jurisdiction prevail.

Preparedness

Protection Planning

All Fire Protection Districts within Saguache County have completed Community Wildfire Protection Plans (CWPPs). Fire Management Plans are in place for all federal lands in the SLV. SLV Counties are in the process of creating County Fire Plans or CWPPs authorized by HB-1283. Local CWPPs may be viewed at:

<http://csfs.colostate.edu/wildfire-mitigation/community-wildfire-protection-plans/>

Protection Areas and Boundaries

Each jurisdictional agency has ultimate responsibility for wildland fire protection and management on its own lands. The County Sheriff is responsible for wildland fire protection on all non-federal lands in each County, including State Lands (CRS-30-10-513).

For all non-wildland fire emergencies, such as automobile accidents, medical, aircraft accidents, search & rescue, etc., notification should be to the County Sheriff's Office Dispatch and/or Colorado State Patrol Dispatch and to the agency with land management responsibility or nearest fire department.

Methods of Fire Protection and Suppression

The agency that can take the quickest effective fire suppression action will be dispatched for initial attack. The jurisdictional agency will assume command of the suppression action at the earliest possible time. Notification of all other agencies that are affected is the responsibility of the responding agency.

Reciprocal (Mutual Aid) Fire Assistance

The mechanism in place for fire departments to cover each other is through the San Luis Valley Fire Fighters Association mutual aid agreement. Federal agencies provide additional coverage through the Interagency Dispatch System.

The mutual aid protection area will be one (1) mile either side of the boundary between the jurisdictional agency's land and the nearest cooperating agency's land. No resources from other jurisdictions will reimburse each other from time of dispatch until midnight of the same day. Mutual aid will continue until midnight, unless commonly agreed upon at the discretion of the cooperating entities, that reimbursement should take place due to a fast moving and complex fire that could be cost shared for reimbursement. Any commonly agreed upon reimbursement will be documented.

At that time, the responsible agency will send the cooperator back to their home base or will request the cooperator to stay and pay will begin in accordance with the pay scales described in Cooperative Resource Rate Form or Federal pay scale found in the Interagency Incident Business Management Handbook (IIBMH). Therefore, initial attack expenses are not reimbursable for mutual aid unless the above conditions are met.

Mutual aid fire protection zones are defined for initial attack purposes only. Assisting agencies will make initial attack on fires within the mutual aid zone based on which agency is in the best position at the time the fire is reported to take the most rapid and effective action. Each agency may make resources available upon request to the other agencies for fires. For such fires, the jurisdictional agency will reimburse the assisting agency for costs. It is understood, however, that no agency will be required or expected to commit its forces to assist another agency to the extent of jeopardizing coverage of their own lands.

The county may pay for suppression cost incurred beyond the mutual aid period. Notification will clearly state what agency has command of the incident. Responsibility for wildland fire suppression on private and state land within a fire protection district (FPD) is shared jointly by the county and the FPD, and reimbursable costs shall be covered as mutually agreed upon by the county and district involved. The County Sheriff is limited in making financial obligations beyond initial attack. In order to have continuous fire suppression activities, the Board of County Commissioners will be notified as soon as County resources have been committed. A County Commissioner, or designee, shall be immediately available to the Sheriff.

Acquisition of Services

Not Applicable within Saguache County.

Joint Projects and Project Plans

Not applicable within Saguache County.

Fire Prevention

General Cooperative Activities

Cooperating agencies may determine that the fire danger warrants fire prevention and suppression patrols. Expenses for these patrols are the responsibility of the home unit.

Information and Education

Fire Danger Information

Information on Fire Weather Stations, Fire Danger, Current Fire Situation, and more can be seen at the following websites:

http://gacc.nifc.gov/rmcc/dispatch_centers/r2pbc/

Fire Weather Station Locations - remote automated weather stations or RAWs data is available to the public at:

http://gacc.nifc.gov/rmcc/obs_weather.php

Fire Prevention Signs - each agency will determine when and where to place fire prevention signs.

Joint or Single Agency Press Releases

Each agency will prepare and release fire prevention material and media presentations according to its own prevention plans. Coordination with other agencies should be maintained in order to prevent a conflict in released material. Where pertinent, all news releases for fire prevention will carry a USFS, DFPC, BLM, fire district, or county sheriff by-line.

Public Use Restrictions

The purpose of fire restrictions and closures is to reduce the risk of human caused fires during high fire danger and/or burning conditions, and for the protection of human life and property. Fire restrictions and closures are invoked on federal, state, county, and private lands under federal and state laws. Public information about restrictions must be broad-based, clear, and coordinated.

All agencies may consult the "Pueblo Zone Procedures for Initiation or Rescinding Fire Restrictions and Purpose of Fire Restrictions & Emergency Closures" document when considering fire restrictions or closures found in

Fire ban information in Colorado may be found at:

<http://www.coemergency.com/p/fire-bans-danger.html>

In the case of any restrictions on burning or public movements because of extreme fire danger, either by Governor's proclamation or by local issue, the county sheriff will be responsible for enforcement on all non-federal lands, and may assist on other lands at the request of the appropriate agency. For federal lands that fall under Montrose Interagency Dispatch please reference **Exhibit E** Montrose Dispatch Area Fire Closure Plan.

Burning Permits

Not applicable within Saguache County

Prescribed Fire (Planned Ignitions) and Fuels Management

Wildfires resulting from escaped prescribed fires ignited by a party to this Agreement on lands it manages shall be the responsibility of that party. The party responsible for the prescribed fire will reimburse other parties to this Plan consistent with the terms and conditions contained herein for costs incurred in suppression of such fires. If parties to this Agreement conduct a cooperative prescribed fire, details covering cost sharing, reimbursement, and responsibility for suppression costs, should it escape, shall be agreed upon and documented in the burn plan.

Smoke Management

Colorado Air Quality Control Commission requires that most outdoor burning have an air quality (smoke) permit. For a description of the exemptions for agriculture, backyard cooking fires, etc., and for other information about smoke permits, see

www.colorado.gov/pacific/cdphe/smoke-management-permits.

Smoke permits are separate from and in addition to burning permits that county agencies may require.

Operations

Fire Notifications

Assisting agencies making initial attack on fires within the mutual aid zone will ensure that the adjacent jurisdictional agency and County Sheriff are promptly notified of the fire through their primary Dispatch. If the fire is on or threatening state or private land, and is expected to exceed the control capabilities of the county, the DFPC fire duty officer should be notified. If the fire is on or within 1 mile of land managed by the National Forest Service, BLM, US Fish and Wildlife Service or National Park Service, then the initial attack dispatch will notify Pueblo Interagency Dispatch Center (719-553-1600).

Boundary Line Fires

If a fire crosses, or threatens to cross, jurisdictional boundaries and becomes a boundary fire (see definition below) a Unified Command will be formed. The purpose of the Unified Command will be to meet as a group and identify one common set of objectives for implementation by the suppression forces. The Unified Command will also determine reimbursement responsibilities and resource sharing between the agencies.

The Unified Command will include representatives from those entities that have financial responsibilities for the fire. In the event of a fire burning on lands of two or more jurisdictional agencies that are normally not dispatched by the same dispatch center, the Unified Command will coordinate and determine which center will do all dispatching.

Boundary Fires include:

- A fire burning in two or more agency jurisdictions, or will soon burn across the boundary, when the boundary line is known
- The fire location is known, but the jurisdictional boundary on the ground is unknown, or
- The location of a reported fire is uncertain in relation to the jurisdictional boundary.

Response to Wildland Fire

Establishing Incident Command

During initial attack, a single responder will establish incident command. This is most often done by the first resource to arrive in the area of the incident, regardless of jurisdiction. In extreme situations, command may be established by a resource in route for the purpose of ordering resources. In either case, it is imperative that all responding units and involved dispatch centers know command has been established. The establishing resource should, at minimum, provide a command name. This is generally based on the perceived geographic location of the fire. If known, the establishing resource should also provide a communications channel, staging area, and brief size up.

If the initial incident commander is not a representative of a jurisdictional or protecting agency for the location of the fire, command should be offered to an appropriate representative when they arrive. The offer may or may not be implemented depending on the situation. Should a transfer of command occur, all involved resources and dispatch centers should be notified.

Resource Ordering

All orders placed for extended attack should go through PIDC as the single ordering point for fire ordering in the Saguache County. These orders will be documented on Resource Orders. It is understood that the agency requesting the resource shall also be responsible for payment.

The appropriate Federal Interagency Dispatch Center will coordinate with federal and county dispatch centers to mobilize requested resources for a wildland incident response. Local emergency managers and EOC's will be utilized for consequence management and all hazards incidents. All requests for federal resources will be processed through either PIDC or MTC depending upon dispatch zone and incident location.

After Action Review (AAR)

An After Action Review (AAR) of incidents will be conducted at a level commensurate with the complexity of the incident. The jurisdictional agency will be responsible for conducting the AAR. Local agencies/entities that were not directly involved in the incident but could potentially benefit from participating in the post-incident action analysis will be invited to attend.

Special Management Considerations

Suppression activities within designated wilderness areas will not be conducted without specific direction from the jurisdictional federal agency. Use of roads on federal lands presently closed to vehicular travel (outside of wilderness areas) is hereby authorized to all parties to this AOP, when said parties are on a fire detection, prevention, or suppression mission. Use of mechanized equipment such as bulldozers, graders, etc. will not be permitted on federal lands without the expressed approval of the appropriate federal official. While GUSG protection and habitat enhancement is a high priority for the Department of Interior, Bureau of Land Management fire management program, firefighter and public safety is the first priority on every fire and takes precedence over natural resource protection. Local agency administrators and resource advisors will convey resource protection priorities to incident commanders. Incident Commanders will then develop and establish incident objective, strategies, and operational tactics that ensure firefighter and public safety.

When an unplanned ignition occurs in Gunnison Sage Grouse habitat (see Exhibit A for map) on Federal land, the respective jurisdiction will immediately be notified so the Fish and Wildlife Service (FWS) can become engaged and emergency consultation can take place when appropriate.

Retardant avoidance areas are shown on the maps located at this web address:

https://ftp.nifc.gov/public/base_info/retardant_avoidance_areas/maps/region_2/riogrande/
https://ftp.nifc.gov/public/base_info/retardant_avoidance_areas/Maps/Region_2/GrandMesa_UncompahgreAndGunnison/

Personnel responding to incidents on BLM Lands must meet the following requirements;

- Be 18 years of age or older;
- Have and use required personal protective equipment (PPE) found in chapter 7 of the Interagency Standards for Fire and Fire Aviation Operations (Red Book); and
- attended basic wildland fire annual refresher training, that covers each of the following topic areas,
 - Entrapment avoidance;
 - Current issues;
 - Fire Shelter deployment;
 - Other hazards and safety issues; and
 - NWCG Course I-100, Introduction to Incident Command System

BLM District/Unit FMOs will coordinate with local fire departments to provide qualified instructors if needed.

Decision Process

A Decision Support System (DSS) may be completed for fires that have the potential to be designated as a State Funded fire or that affects multiple jurisdictions and has the potential to go into extended attack. DFPC may assist with a non-EFF DSS, but has no authority to sign on non-EFF fires.

DFPC requires that a DSS be completed for all fires that receive a FEMA declaration and recommends a DSS is completed for all State Funded fires. All agencies involved in extended attack on private and state lands will provide input to the DSS. The DFPC Line Officer will facilitate completion and review of the DSS for these fires. When a fire is burning on or threatens to burn on multiple jurisdictions, one DSS should be prepared that considers all jurisdictions and their interests.

Federal agencies are required to utilize the Wildland Fire Decision Support System (WFDSS) for fires on their lands. If multi-jurisdictional fires occur that involve federal lands, then one WFDSS should be completed for the incident that includes input from all affected jurisdictional agencies.

Cooperation

All of the fire protection agencies within Saguache County have current mutual aid agreements in place and agree to cooperate to the extent possible to bring rapid stabilization of wildland fires occurring in, near, and around Saguache County.

The County, State, and Federal agencies agree to cooperate to the extent possible to plan for and respond to fire incidents within the county.

Communication

All parties agree that a common communications plan is essential during a wildland fire event.

As such, a common “Command” talk group or channel will be established that all responders can operate on, and that can be monitored by the Interagency Dispatch Center(s) and Saguache Sheriff’s Dispatch. Separate “Tactical” talk groups should be established for each division of the fire. These need to be accessible to all responders assigned to that division as well as the Incident Commander.

See Exhibit D for an SLV-wide listing of local, state, federal, and common use frequencies.

Cost efficiency

Maximizing cost effectiveness of any fire operation is the responsibility of all involved, including those that authorize, direct, or implement those operations. Cost effectiveness is the most economical use of suppression resources necessary to accomplish mission objectives.

Accomplishing fire objectives safely and efficiently will not be sacrificed for the sole purpose of “cost savings”. Care will be taken to ensure that suppression expenditures are commensurate with values to be protected while understanding that other factors may influence spending decisions.

Delegation of Authority

The agency administrator(s) shall furnish a Delegation of Authority to the Incident Commander or team for all fires that escape initial attack. Public safety cannot be delegated away from the County Sheriff (CRS-30-10-513)

Preservation of Evidence

The jurisdictional agency will have primary responsibility for fire cause investigation and any civil or criminal follow-up actions taken. The follow-up actions will list all agencies involved in the suppression effort. When initial attack is made by other than the jurisdictional agency, the protecting agency will immediately preserve information and evidence pertaining to the cause and origin of the fire for the jurisdictional agency. Fire cause determination is required for both EFF and FEMA incidents.

In the case of human-caused fires with a known suspected trespasser, each party to the AOP agrees to pursue cost recovery on behalf of all agencies involved with the fire suppression when the fire originates on lands within their jurisdiction. All costs of fire suppression and rehabilitation from the time of initial report will be included in the cost recovery effort regardless of mutual aid assistance. If the jurisdictional agency responsible for the fire chooses not to pursue cost recovery, the other parties to this AOP may pursue cost recovery on their own, through the procedures available to them to do so.

State Funded Fires

Saguache County is a participant in the EFF Agreement with DFPC. As a participant to this agreement, the State agrees to come to the aid of the County should suppression resource needs exceed County capability. State Funding can only be implemented upon request of the County with mutual agreement by DFPC. The County must notify DFPC immediately should an incident occur which has the potential to exceed County capability. This will allow time for a DFPC representative to travel to the scene.

Minimum County Commitment: In the event of an incident that qualifies, the County agrees to supply and pay for the following resources, if necessary for suppression, for the duration of the fire:

- One (1) Sheriff's Office representative, 24-hour staffing if necessary
- One (1) water tender with operator, 24-hour staffing if necessary
- One (1) dozer or grader with operator, 24-hour staffing if necessary
- One (1) engine, fully staffed, 24-hour staffing if necessary

The resources listed above should serve as a starting point, if resources do not fit incident needs alternate resources may be substituted with approval from DFPC Agency Representative. These changes will be documented in the Cost Share Agreement. DFPC#108A: The criteria utilized for evaluating wildfires for possible EFF funding are listed in the form DFPC #108A. This evaluation is also used to determine the return of control to the County.

Use and Reimbursement of Interagency Resources

Cost Share Agreement (Cost Share Methodologies)

Written cost share agreements should be prepared when a wildfire burns across or threatens jurisdictional boundaries, and/or exceeds the mutual aid period. The intent is to appropriately distribute the financial burden based on a method agreed upon by a representative from each affected jurisdiction. A cost share agreement should be negotiated as soon as practical.

When a wildfire occurs on lands of more than one agency and costs are incurred beyond the mutual aid period, one of the following three options may be used to determine reimbursable costs to the agencies involved:

- Each agency assumes its own costs as expended by it in the fire control effort.
- Fire costs may be divided based upon ownership and acreage percentages.
- Costs may be divided as mutually agreed upon by agency representatives as soon as possible after the mutual aid period.

When a fire is accepted by the State as a State Funded incident, the Fire Cost Share Principles agreed to by the State and Federal agencies may be used as a foundation of discussion. On incidents that are State Funded, the value of work done by local fire districts will be tracked but may be included as the County's minimum contribution.

Training

National Wildfire Coordinating Group (NWCG) wildfire training courses, meeting the Field Managers Coordinators Guide, are provided periodically by DFPC, USFS, BLM, NPS, Fire Departments and other agencies. The Colorado Wildland Fire and Incident Management Academy is another option for training. www.cwfima.com. As these courses are scheduled, all cooperators will be informed and invited to participate. Non NWCG courses may be scheduled as appropriate. DFPC will attempt to provide specific training opportunities for fire district personnel and other private organizations as requested, and as time allows.

The Pueblo Zone Training Committee (a sub-group to the Pueblo Interagency Fire Board) exists to promote wildland fire training throughout the Pueblo Zone. Contact your local DFPC Zone Fire Management Officer to be included in the Pueblo Zone Training email distribution list to receive information regarding local to national wildland fire training information.

Communication Systems

For the purposes of conducting business authorized by this plan, all parties to this operating plan agree that assisting agencies may use the jurisdictional agency's radio frequencies as needed to conduct emergency communications on fires of the jurisdictional agency. No party to this operating plan will use, or authorize others to use, another agency's radio frequencies for routine day to day operations.

Saguache County currently utilizes the state 800Mhz Digital Trunked Radio System and VHF for its daily operations. A State Mutual Aid Channel (MAC) may be assigned by dispatch for out of area resources responding within the county.

Federal land management agencies use a VHF Radio system for their daily operations. Please see Exhibit D.

Fire Weather Systems

Red Flag/Fire Weather Announcements

The National Weather Service in Pueblo periodically issues "FIRE WEATHER" watch and "RED FLAG" warning bulletins. The Colorado State Patrol Dispatch in Denver will alert the County Sheriff's Offices when a Red Flag Warning is in effect. It is therefore the responsibility of the County Sheriff's office to relay this warning to their local Fire Departments.

RED FLAG WARNING: This warning is issued by the National Weather Service when weather conditions that will cause erratic fire behavior are predicted. These conditions may include very low humidity, high temperatures, high winds and the occurrence of dry lightning. Initial attack may require additional forces or air support under these conditions. This warning is issued to advise agencies of the imminent or actual occurrence of these weather conditions.

A "Fire Weather Watch" is issued to advise agencies of the possible development of red flag conditions in the near future. It will be issued by the fire weather forecaster for any part of or all of the Colorado fire weather zones. A watch shall be issued when the forecaster is reasonably confident that a Red Flag Event will occur within the next 12 to 72 hours. The Fire Weather Watch shall remain in effect until the forecaster determines that the critical weather conditions are imminent or are occurring (then upgrade to a warning), or until it can be determined that the expected event will not

occur, and thus the watch will be canceled or allowed to expire.

Aviation Operations

Aviation Map

The Interagency Dispatch Centers (Pueblo, Montrose, Durango, and Taos) have mapped aviation hazards, flight routes, and other information. They are on file with their agency Aviation Plans and Fire Management Action Plans. All air resources go through the appropriate interagency dispatch center.

Flight Following/Frequency Management

The Interagency Dispatch Centers (Pueblo, Montrose, Durango, and Taos) will flight follow per national direction for aircraft ordered through them.

Aviation Ordering Procedure

Aircraft are ordered through normal dispatching procedures. The appropriate Federal Interagency Dispatch Center will receive Aircraft orders from the Incident Commander or their designee.

Lead Plane/Air Attack Activation

Aviation orders are accepted as to what is available and is the closest resource. A lead plane may be necessary and activated. Be as specific as possible when ordering an air resource and be aware that other requirements and expenses may be necessary.

Aviation Requests and Operations

Aircraft orders will be made through the appropriate Federal Interagency Dispatch Center and will only be accepted from the Incident Commander or designee. Each County will establish ordering procedures. The following information will be included in the aircraft request:

- Incident name
- Location (latitude and longitude) degrees, decimal minutes
- Jurisdiction
- Air contact with air to air radio frequency (if other aircraft present)
- Any other aircraft in the area.
- Values at risk (structures, type, etc)
- Hazards (power lines, towers, etc)
- Ground Contact with air to ground radio frequency
 - A/G (35) - 167.2250 or A/G (10) 166.9375 (RGNF Side)
 - A/G (15) 167.525 or A/G (07) 166.8500 or A/G (13) 167.4250 (GMUG Side)

Inspection Schedules

No aircraft inspections are scheduled as part of this AOP.

Billing Procedures

The procedure for reimbursement for local agencies through DFPC will occur via the Cooperative Resource Rate Form (CRRF). Billing may be made for equipment and/or personnel listed on the CRRF with the corresponding documentation. Current procedures and forms can found at the DFPC website:

<http://dfs.state.co.us/>

Cost Recovery

Both the County and the State reserve the right to pursue reasonable cost recovery efforts for equipment, personnel, and supplies utilized in response to a wildland fire that extends beyond the mutual aid period. This includes the facilities and administrative fee, also known as indirect rate. This includes pursuing legal action against any party determined to be responsible for the cause of the fire.

General Provisions

This AOP is the framework for cooperation between the State and the County. It does not supersede any other lawful policy, rule, or procedure. This AOP may be utilized as part of the Counties master emergency operations plan. The County is encouraged to create AOP's, MOU's and Agreements with their local response agencies.

Personnel Policy

All government employees shall be employed at their regular salary rate. All non-government employees will be paid at agency department rates. If no agency department rates have been set, then DFPC established rates will be used. These can be found at the DFPC website:

<http://dfs.state.co.us/>

Modification

Changes may be made to this plan at any time during the plan cycle as needed. These changes must have the concurrence of all parties before being placed into the plan document.

Annual Review

The annual operating plan must be reviewed annually. If no changes are made, a statement letter with signatures of all parties to this AOP will be distributed. A meeting of cooperating agencies will be held each year. The updated plan will be circulated for signatures prior to May.

Duration of Agreement

This plan is to be considered in full effect upon the date of the signatures. This plan will remain in effect until rescinded by the parties, or until April 1, 2020, whichever occurs first.

Previous Agreements Superseded

Any and all previously dated Annual Operating Plans pertaining to wildland fire within Saguache County are hereby null and void upon the date of the signatures on this current plan

Signatures

Authorized Representatives



Dan Warwick
Saguache County Sheriff

03/19/19

Date



Ken Anderson
Saguache County Commissioner

3-19-19

Date

Division of Fire Prevention and Control



Devin Haynie
San Luis Valley Regional F.M.O.

3/19/19

Date

Federal Land Management Agency Signatures

Michael Stansberry
For Dan Dallas
MICHAEL STANSBERRY
Forest Supervisor, Rio Grande National Forest

5/7/2019
Date

The expiration date for the Forest Service is 12/31/2019 per the terms and conditions of the Statewide Master Cooperative Fire Agreement, 11FI-11021000-17.

Catherine L. Cook
Catherine Cook
Rocky Mountain District Manager, Bureau of Land Management

2/25/19
Date

Sharon Vaughn
Sharon Vaughn
Project Leader, San Luis Valley NWR Complex

3/13/19
Date

Pamela Rice
Pamela Rice
Acting Park Superintendent,

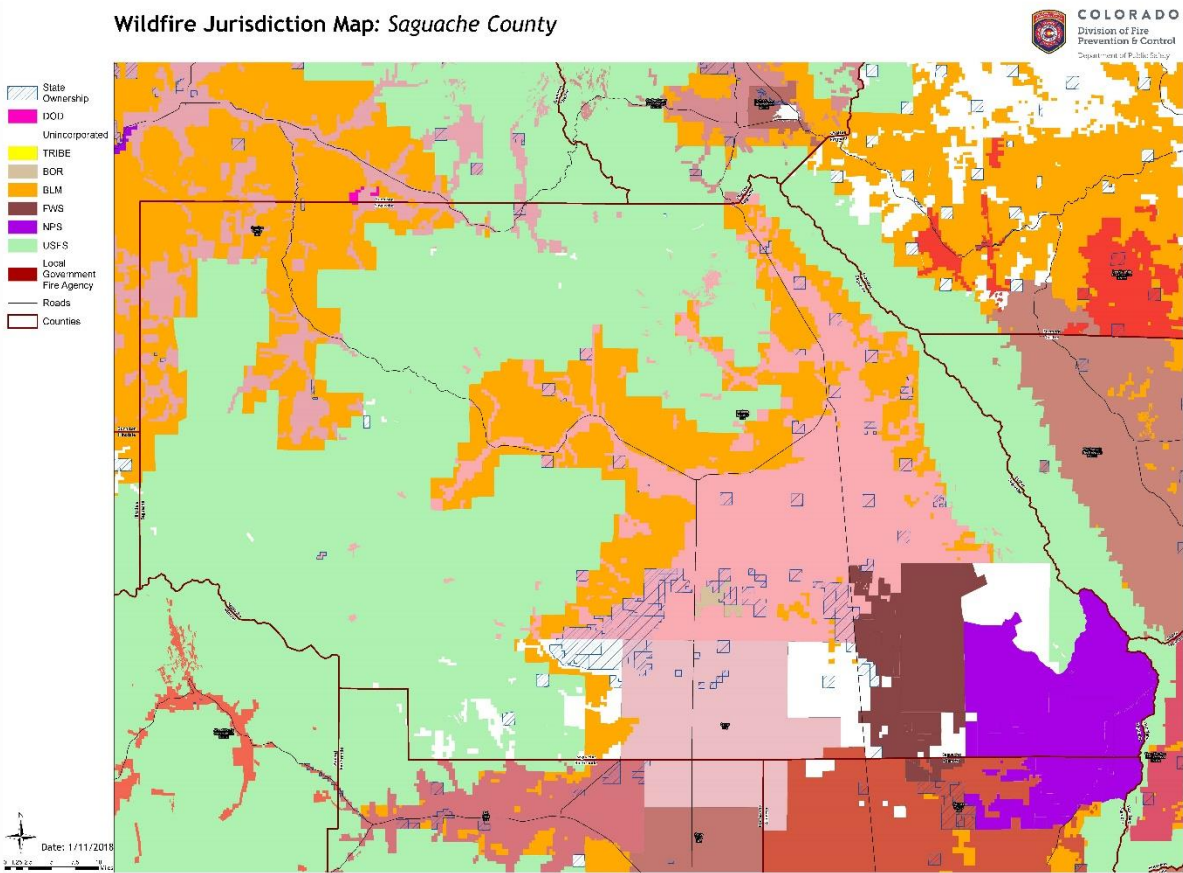
3/28/19
Date

Chad Stewart
Chad Stewart (acting)
Forest Supervisor Grand Mesa, Uncompahgre and Gunnison National Forests.

3/26/19
Date

Authority and format of this instrument has been
verified and approved for signature.
Patricia Robinson
Forest Service G & A Specialist
3/20/19
Date

Exhibit A: Maps



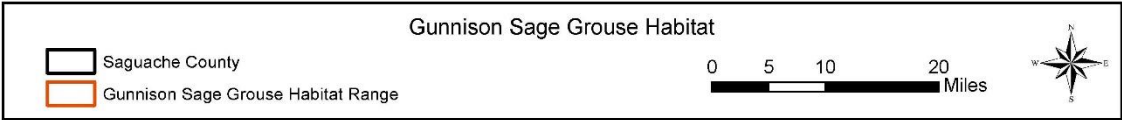
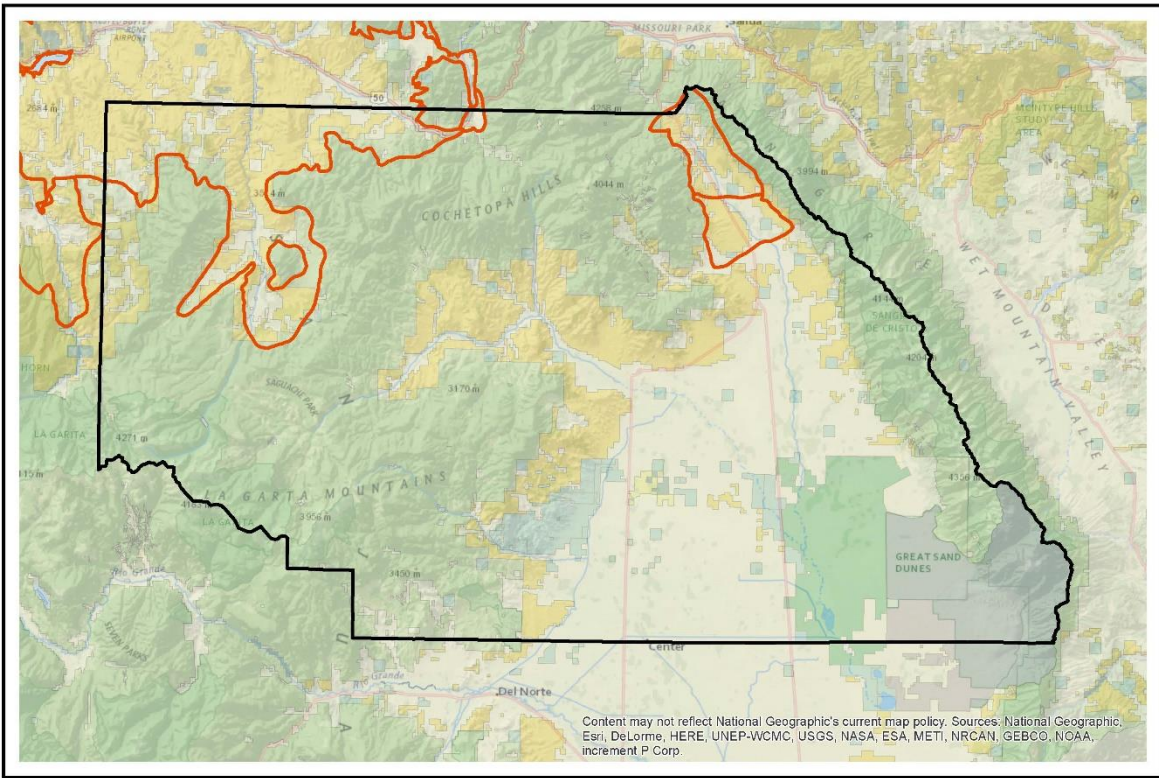


Exhibit B

Colorado Division of Fire Prevention and Control 2019 Wildland Fire Resource Funding Guidelines



The Colorado Division of Fire Prevention and Control (DFPC) is required by State Law to administer and manage programs to assist local jurisdictions with safe and effective wildland fire response. Funding for wildland firefighting resources under these various programs are eligible for reimbursement to any Colorado County Sheriff, fire protection district, or municipal fire department in accordance with the following guidelines. **Funding and reimbursement will occur to the extent that program funds are available.**

Summary of Eligible Resources			
Resource – ¹	Initial Attack Period (Not to Exceed 24 hours)	2 nd Operational Period	3+ Operational Periods
Hand Crew	Yes – ²	Yes – ²	No
DFPC Engines	Yes – ³	Yes – ³	Yes – ⁴
DFPC Overhead	Yes – ⁴	Yes – ⁴	Yes – ⁴
Type 3 Helicopter	Yes	Yes – ⁴	Yes – ⁴
Type 2 Helicopter	Yes	Yes – ⁴	Yes – ⁴
Type 1 Helicopter	Yes	No	No
Single Engine Air Tanker	Yes	Yes – ⁴	Yes – ⁴
Large Air Tanker	Yes	No	No
Very Large Air Tanker	Yes – ⁴	No	No
Multi-Mission Aircraft	Yes	Yes	Yes – ⁴
Aerial Supervision	Yes	Yes	Yes – ⁴

Notes:

- ¹ DFPC must be notified as soon as possible via the State Emergency Operations Line (303-279-8855) for usage that exceeds either 1 hour of rotor time for any helicopter and/or 1 drop from any air tanker.
- ² 2 hand crew days allowed if ordered within the first 2 days of the incident.
- ³ Use of DFPC Engines is allowed during the first 48 hours of an incident with no charge to local government.
- ⁴ Resource use must be pre-approved by DFPC Operations Chief or designee.

Funding Requests and Notifications

- As stated in Note 1 above, **notification to DFPC must occur as soon as possible via the State Emergency Operations Line (303-279-8855)** if there are multiple hours of helicopter time or multiple air tanker drops on an incident. If the requesting agency is expecting the State of Colorado to pay for any amount of resource use, that agency **must formally notify DFPC** after the incident as indicated below.
- All funding and reimbursement requests *must* be made to DFPC within 7 days of resource use. All requests should be documented on the *DFPC Wildfire Funding Notification and Request* form, and must include the following information: Who requested the resource (Sheriff, fire chief, etc.); Fire Name; Incident Number (whenever available); Resource Name(s); Dates of Use; and Copies of Resource Orders (whenever available). Formal funding and reimbursement requests can be made either via email to: wildlandfire@state.co.us with a carbon copy to your DFPC Battalion Chief, or by using the online form that can be accessed at: <https://goo.gl/forms/HWEYDJTXxE5iG4F33>

Additional Details – Hand Crews	
Eligible	Hand crew logistics costs of lodging, camping, transportation/fuel and per diem.
	Crews must be qualified in accordance with applicable NWCG standard.
	Different crews may be used, but only for a total of 2 hand crew days per incident.
Not Eligible	Travel time to bring hand crews from outside Colorado.
	Crews utilized within their jurisdiction or utilized in accordance with pre-established Mutual Aid agreements.
Additional Details – Aviation Resources	
Eligible	Resource(s) utilized on state and private land fires, and for fires that occur within the federal mutual aid areas as defined in the County AOP.
	A combination of fixed and rotor wing resources may be funded on the same incident, subject to pre-approvals outlined above.
	Resource(s) beyond the first operational period may be approved by DFPC, based on factors such as fire potential, values at risk, defined mutual aid periods, boundary line fires, availability of funds, etc.
	Additional government helicopter personnel, support equipment and apparatus (helitack crew), as outlined in Interagency Incident Business Management Handbook and appropriate supplements.
	Fuel and support trucks assigned to aviation resources. Contracted vendor support crew, relief crew and other expenses to maintain aircraft availability.
	Daily availability costs of aircraft.
	Only OAS or USFS interagency FIRE carded pilots and aircraft, ordered through the procedures outlined in the County AOP.
Not Eligible	Non-operational flight time costs (ferry time, point to point etc.) to bring aerial resources to Colorado.
Process	1. Requesting agency orders appropriate Kind and Type of resource(s). Consult the County AOP for the local, state, and interagency dispatch procedures to order aviation resources.
	2. The Closest Forces concept will be utilized meaning that the closest available resource of the Kind and Type requested will be dispatched to the incident.
	3. DFPC must be notified via the State Emergency Operations Line (303-279-8855) if multiple aviation resources are ordered on an incident.
	4. Costs for resources utilized outside of these guidelines, will be charged to the requesting agency(ies). Actual costs vary by resource used.
Questions concerning this guidance should be directed to your DFPC Battalion Chief.	

Exhibit C

DFPC Contact List Saguache County					
For official use only please do not disseminate					
DFPC			National Park Service		
Devin Haynie	719-464-5345	SLV RFMO	Sand Dunes NP		719-378-6399
Paul Duarte	719-850-2387	EA FMO	Vacant	719-588-3611	Park Sup
Steve Ellis	970-596-0685	WA FMO	Dale Culver	719-588-2014	Chief Ranger
State Of Colorado Emergency Hotline Request DFPC Duty Officer 303-279-8855			Mike Lewelling	970-232-5326	Park FMO
			Fish & Wildlife Service		
U.S. Forest Service			San Luis Valley Complex		
Rio Grande National Forest		719-852-6200	Sharon Vaughn	719-589-4021	Valley MGR
Duty Officer	719-852-6218		Ron Garcia	719-588-5653	Baca MGR
Chad Lewis	719-850-2380	Forest FMO	Dean Lee	719-588-5336	Ast MGR
Dan Dallas	719-850-2355	Forest Supervisor	Bill Waln	620-727-3466	FWS FMO
Tristram Post	719-655-2554	District Ranger			
GMUG East Zone		970-641-0471	Saguache County		
Pat Medina	970-596-1086	EZ FMO	Jason Anderson	719-655-2231	Commissioner
James Ramirez	970-615-0245	EZ AFMO	Tim Lovato	719-655-2231	Commissioner
Matt McCombs	970-641-4171	District Ranger	Ken Anderson	719-655-2231	Commissioner
Bureau of Land Management Front Range FMU 719-269-8500			Wendy Maez	719-655-2231	Co-admin
			Glen Simpson	719-655-2231	Co-admin
Catherine Cook	719-269-8500	DM	Dan Warwick	719-655-2525	Sheriff
Melissa Garcia	719-239-0494	FM	Jim McCloskey	719-655-2525	Under Sheriff
Duty Officer	719-269-8730		Bobby Woelz	719-588-0197	EM
Tyler Webb	719-429-3172	FR FMO	Dispatch Centers		
Paul Minow	719-850-2386	FR DFMO	C.S.P. Alamosa		719-589-5807
			Pueblo Interagency		719-553-1600
South West FMU		970-240-5300	Saguache County Sheriff		
	719-269-8500	DM	719-655-2525		
Elijah Waters	970-570-0042	FM	Montrose Interagency		970-249-1010
Duty Officer	970-249-1010		Rio Grande County Sheriff		719-657-4000
Brandon Lewis	970-596-5359	SW -DFMO	Gunnison FPD		970-641-8201
Randy Chappell	970-596-6343	SW -DFMO	Cooperating Fire Departments		
Brian Yeager	970-596-3635	SW FOS	Baca Grande	Tadd Crawford	719-256-4171
			Center	Russell Brown	719-580-3540
			Gunnison FPD	Dennis Spritzer	970-901-9849
			Kundalini FM	Peter May	719-588-1888
Colorado State Forest Service			N. Saguache	Wes Moores	719-221-9948
Alamosa District		719-587-0915			
Adam Moore	719-480-3141	District Forester			

Exhibit D

DFPC Radio Frequency List						
For official use only please do not disseminate						
Agency	Dispatch Channel 800MHZ	Tactical 800mhz	Dispatch VHF Transmit	Dispatch VHF Receive	Code Guard TX VHF	Tactical VHF
Alamosa County						
Alamosa Fire	ACFE	Alamosa F Tac 1	158.8950	154.2200		
Mosca Hooper	ACFE	Alamosa F Tac 2	158.8950	154.2200		
Alamosa PD	ARCC 2		159.2100	154.8000	156.7 both	
Alamosa Sheriff	ARCC 2		159.1500	154.4150	114.8 both	
Alamosa Ambulance	ACFE					
Conejos County						
Antonito	ARCC 5	Antonito TAC	154.1450	154.1450		
Capulin	ARCC 5	Capulin TAC	154.1450	154.1450		
Carmel	ARCC 5	Carmel TAC	154.1450	154.1450		
La Jara	ARCC 5	La Jara TAC	154.1450	154.1450		
Manassa	ARCC 5	Manassa TAC	154.1450	154.1450		
Romeo	ARCC 5	Romeo TAC	154.1450	154.1450		
Sanford	ARCC 5	Sanford TAC	154.1450	154.1450		
Conejos EMS	ARCC 5	Conejos MAC	154.1450	154.1450		
Conejos Sheriff	ARCC 4		158.8500	155.6700	127.3 both	
Costilla County						
Costilla County FPD	Costilla Fire Tac	Costilla Mac	154.3250	154.3250	110.9 both	
Costilla EMS	ARCC 5					
Costilla Sheriff	Costilla Law		155.8650	150.8650	141.3 both	
Mineral County						
Mineral Fire	Mineral Fire Tac	Mineral Fire Tac	154.1000	155.8050	156.7 both	
Mineral EMS	Mineral EMS					
Mineral S&R			158.9100	155.9100	141.3 both	
Mineral Sheriff	Mineral Law		158.9100	155.9100	156.7 both	

DFPC Radio Frequency List

For official use only please do not disseminate

Agency	Dispatch Channel 800MHZ	Tactical 800mhz	Dispatch VHF Transmit	Dispatch VHF Receive	Code Guard TX VHF	Tactical VHF
Rio Grande						
Del Norte Fire	DNFD	DNF Tac	154.7400	155.9550	156.7 both	
Monte Vista Fire	MVFD/MV AMB	MVFD TAC	150.7900	154.2500	156.7 both	
South Fork Fire	ARCC 5	SF TAC	153.8900	154.3550	156.7 both	
DN Ambulance	RGSO					
Monte Vista EMS	MVFD/MV AMB	SLV EMS West				
Rio Grande Sheriff	RGSO		153.9200	155.9400	156.7 both	
Saguache						
Center	Center Fire EMS	Center TAC	159.0300	155.0100	123.0 both	
N. Saguache FPD	Saguache Fire Tac	Saguache Mac	155.7450	154.1900	162.2 both	
Baca Grande	ARCC 5	BG TAC	154.4450	154.4450	110.9 both	
Kundalini						
Saguache EMS	Saguache EMS	Saguache Mac	154.1900	154.1900		
Saguache Sheriff	Saguache Law		155.9700	154.7850	162.2 both	
Common Mutual Aid Channels						
County	800mhz Channel Name	800mhz Tactical	Air Evacuation VHF	Air Evac Tx VHF	Air Evac RX VHF	Air Evac CG VHF
Alamosa	Alamosa Mac	Simplex 1	Vfire21	154.2800	154.2800	156.7 tx
Conejos	Conejos Mac	Simplex 1	Vfire21	154.2800	154.2800	156.7 tx
Costilla	Costilla Mac	Simplex 1	Vfire21	154.2800	154.2800	156.7 tx
Mineral	Mineral Mac	Simplex 1	Vfire21	154.2800	154.2800	156.7 tx
Rio Grande	Rio Grande Mac	Simplex 1	Vfire21	154.2800	154.2800	156.7 tx
Saguache	Saguache Mac	Simplex 1	Vfire21	154.2800	154.2800	156.7 tx

DFPC Radio Frequency List

For official use only please do not disseminate

U.S. Forest Service Rio Grande N.F.

Repeater Name	VHF Tx	VHF Rx	VHF CG	Use	Type	
RGF Direct	172.2500	172.2500	123.0 tx	Command	Simplex	
Boot Mountain	172.2500	164.1500	110.9 tx	Command	Repeater	
Bristol	172.2500	164.1500	136.5 tx	Command	Repeater	
Circus Rocks	172.2500	164.1500	141.3 tx	Command	Repeater	
Greyback	172.2500	164.1500	146.2 tx	Command	Repeater	
No Name	172.2500	164.1500	114.8 tx	Command	Repeater	
Razor Creek	172.2500	164.1500	127.3 tx	Command	Repeater	
RGF Portable 1	172.2500	164.1500	103.5 tx	Command	Repeater	
Saguache Park	172.2500	164.1500	151.4 tx	Command	Repeater	
San Antone	172.2500	164.1500	156.7 tx	Command	Repeater	
Whale Hill	172.2500	164.1500	131.8 tx	Command	Repeater	
Zapata	172.2500	164.1500	167.9 tx	Command	Repeater	
Fire Tac 1	166.9875	166.9875		Tactical	Simplex	
Fire Tac 2	168.6750	168.6750		Tactical	Simplex	
Work 1	163.7125	163.7125		Tactical	Simplex	
Work 2	168.6125	168.6125		Tactical	Simplex	
Air to Ground 35	167.2250	167.2250		Air Tactical	Simplex	
Air to Ground 10	166.9375	166.9375		Air Tactical	Simplex	
Air Guard	168.6250	168.6250	110.9 both	Emergency	Simplex	
Flight Follow	168.6500	168.6500	110.9 tx	Air Tactical	Simplex	
VFire21	154.2800	154.2800	156.7 tx	Mutual Aid	Simplex	

DFPC Radio Frequency List

For official use only please do not disseminate

U.S. Forest Service GMUG

Repeater Name	VHF Tx	VHF Rx	VHF CG	Use	Type
Raspberry	164.4500	170.0250	107.2T 173.8R	Command	Repeater
9 Mile	164.8250	170.4625	167.9 T	Command	Repeater
Bald MT	164.8250	170.4625	136.5 T	Command	Repeater
BLM Work	168.3500	168.3500		Tactical	Simplex
Bobcat	165.4500	170.0250	146.2T 173.8R	Command	Repeater
FS Work	164.9875	164.9875		Tactical	Simplex
GrayHead	165.4500	170.0250	123.0T 173.8R	Command	Repeater
Gunnison Portable	164.8250	170.4625	127.3T	Command	Repeater
Hill 71	164.8250	170.4625	146.2T	Command	Repeater
Island Lake	164.8250	170.4625	107.2T	Command	Repeater
Jackson	164.8250	170.4625	114.8T	Command	Repeater
Jumbo	164.8250	170.0250	71.9T 173.8R	Command	Repeater
Landsend Base	164.8250	170.4625	100.0 T	Command	Repeater
Landsend Repeat	164.8250	170.4625	103.5 T	Command	Repeater
Lone Cone	165.4500	170.0250	179.9T 173.8R	Command	Repeater
Manti La Sal	165.4500	170.0250	167.9 T	Command	Repeater
Monarch	164.8250	170.4625	156.7 T	Command	Repeater
MontPelier	164.8250	170.4625	114.8 T	Command	Repeater
Montrose Portable	165.1500	170.0250	127.3T 173.8R	Command	Repeater
Mud Hill	164.8250	170.4625	110.9 T	Command	Repeater
Paonia Base	164.8250	170.4625	162.2 T	Command	Repeater
Pilot Knob	164.8250	170.4625	131.8 T	Command	Repeater
Razor Dome	164.8250	170.4625	192.8 T	Command	Repeater
Reno Div	170.0250	170.4625	151.4 T	Command	Repeater
Stormking	170.0250	170.0250	173.8 T/R	Command	Repeater
Vfire21	154.2800	154.2800	156.7 T	Mutual Aid	Simplex
South Matchless	166.4250	172.3250	103.5T	Command	Repeater
Gmug Fire Tac	167.5500	167.5500		Tactical	Simplex
Fire Tac 7	169.2875	169.2875		Tactical	Simplex

DFPC Radio Frequency List

For official use only please do not disseminate

Channel Name	Type	Tx	Rx	Cg	Use
DFPC Main	800 MHZ				Command
DFPC ADM	800 MHZ				Administrative
DFPC West	800 MHZ				Command
DFPC East	800 MHZ				Command
DFPC NE	800 MHZ				Command
DFPC SE	800 MHZ				Command
DFPC SW	800 MHZ				Command
DFPC NW	800 MHZ				Command
CSP State wide	800 MHZ				Hailing
Simplex 1	800 MHZ				Tactical
DFPC Command	VHF	159.4575	155.4600	156.7 both	Command RPT
DFPC T1	VHF	154.6800	154.6800	156.7 rx	Tactical
DFPC T2	VHF	154.6950	154.6950	156.7 rx	Tactical
DFPC T3	VHF	154.8300	154.8300	156.7 rx	Tactical
DFPC T4	VHF	154.9200	154.9200	156.7 rx	Tactical
CSFS Work	VHF	151.3400	151.3400		Tactical
Colorado State Patrol					
ARCC 1	800 MHZ				Dispatch
ARCC 6	800 MHZ				Overflow
CSP State Wide	800 MHZ				Hailing
CSP 3		154.905	154.905	156.7 both	Backup
Vlaw31		155.475	155.475	156.7 both	Backup
DHSEM					
ARCC 1	800 MHZ				

Exhibit E

Restriction/Closure Plan

When weather factors or fire suppression impacts become a concern, the following guidelines will be used to determine if Restrictions/Closures should be considered:

Montrose Interagency Dispatch Response Area at Preparedness Level 4 or Above, and:

Local fire activity is impacting local agencies' suppression resources; making adequate initial attack difficult.

Local area is receiving a high occurrence of human-caused fires, or the human caused risk is predicted to increase.

Adverse fire weather conditions and risks are predicted to continue.

Implementation of existing fire restrictions is not adequately reducing human-caused fires.

Consider initiating STAGE I Fire Restriction if:

- Preparedness Level is 4, and
- One of the above conditions is met.

Consider initiating STAGE II Fire Restriction if:

- STAGE I Fire Restriction has been in effect,
- Preparedness Level is 4 or above, and
- All of the above conditions are met.

Consider initiating STAGE III Closure if:

- STAGE II Fire Restriction has been in effect, and
- Preparedness Level is 5, and
- All of the above conditions are met.

Closures are extremely rare events, and will only be implemented in extraordinary situations, after significant interagency coordination, and when there is a very high risk to human life or property and the ability to manage those risks using Stage I or Stage II Fire Restrictions is no longer viable. Closures should be implemented only in situations where the public's safety cannot be guaranteed.